

ACTIVA™ PRONTO

UNIVERSAL STACKABLE COMPOSITE

Nature's Magic in a Dental Composite

The first light cure composite developed to mimic the properties of natural teeth

ACTIVA™ PRONTO is a universal, stackable and shapeable, light cure composite that is strong, durable, wear and fracture resistant, **releases and recharges calcium, phosphate and fluoride**, and is indicated for all classes of cavities.

The Magic is in the Resin

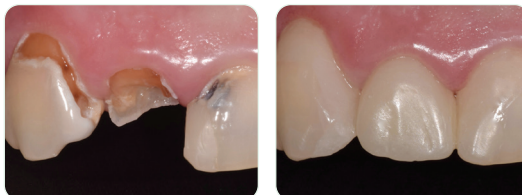
- Highly esthetic, light cure, dentin and enamel replacement material
- Patented rubberized-resin absorbs stress and resists wear, fracture, and chipping, even in thin areas on bevel margins
- Hydrophilic resin facilitates diffusion of bioavailable calcium, phosphate and fluoride ions
- Penetrates and integrates with tooth structure for margin-free adaptation to teeth
- Contains No Bis-GMA, No Bisphenol A, No BPA derivatives

Dr Robert Lowe - US



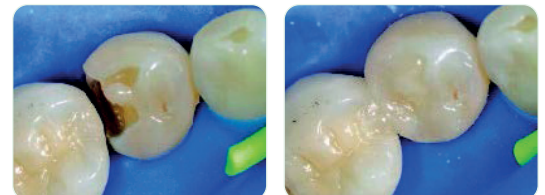
Cervical repair was made with Activa Pronto A6 shade. Can you find it?

Dr Les Rykiss - Canada



Severe caries restored with Activa Pronto A1 and A2 shade.

Dr Stefano Daniele - Italy



Class II fractured filling replaced with Activa Pronto A3 shade.

Clinical Advantages

- Unique stackable, low-flow composite holds shape and does not slump for controlled placement
- Strong, tough, durable, wear and fracture resistant
- Versatile – Universal composite for all classes of cavities
- Pronto is available in A1, A2, A3, A3.5, A4, A6, B1, BW (Bleach White). A4 and A6 are cervical shades that are especially useful when treating older patients.
- Highly radiopaque (250%)
- Easy to place, easy to use 1.2mL syringes

Physical Properties

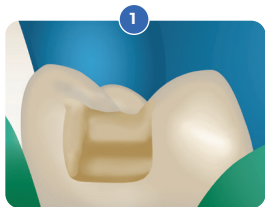
Light cure setting time: **20 ± 2 seconds**
 Depth of light cure: **2.5mm**
 Polymerization shrinkage: **2.1%**
 Fluoride release 1 day: **230 ppm**
 Fluoride release 28 days (cumulative): **940 ppm**
 Solubility: **0.26%**
 Water sorption (1 week): **1.01%**

Filler by weight: **70%**
 Flexural modulus: **8 GPa**
 Compressive strength: **327.4 ± 14.8 MPa**
 Diametral tensile strength: **53 MPa ± 2 MPa**
 Deflection at break: **0.8mm**
 Radiopacity: **2.5 AL (250%)**

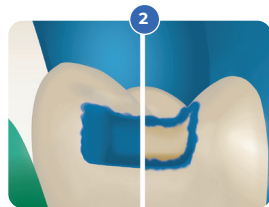
The Tooth is the Standard

Materials	Esthetic	Moisture-Friendly	High Strength	Releases Calcium, Phosphate	Shock-Absorbent
Tooth Structure	yes	yes	yes	yes	yes
ACTIVA PRONTO	yes	yes	yes	yes	yes
Composite	yes	no	yes	no	no

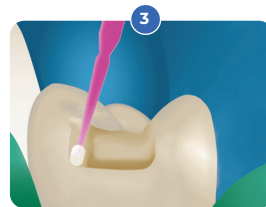
Chairside Guide



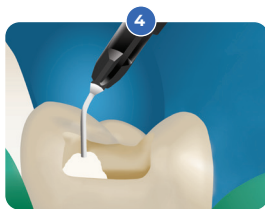
1
Prepare cavity
Bevel enamel margins



2
Total or selective etch



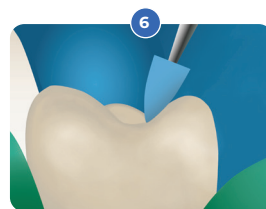
3
Apply bonding agent
per instructions



4
Place Pronto in 2.5 mm
increments



5
Light cure after each layer



6
Finish and polish



CODE AND DESCRIPTION

VNF1* - 2 x 2.2 gr (1.2mL) syringes + 20 applicator tips (19 ga)
 (* Specify Shade : A1, A2, A3, A3.5, A4, A6, B1, BW)

19K20 - Black, 19 ga x 1/2", Prebent Tips, Pkg. 20

19K100 - Black, 19 ga x 1/2", Prebent Tips, Pkg. 100

